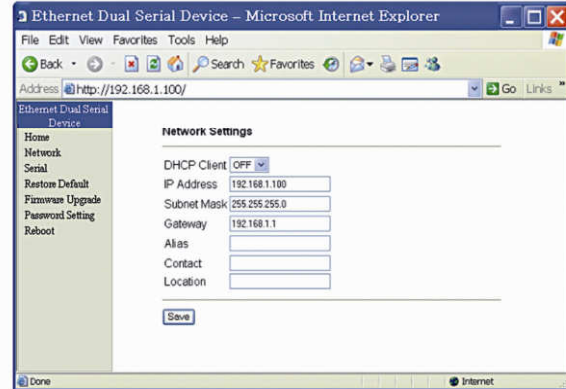


# ARS1200 Ethernet Dual SerialBridge™



## LAN Tunneling for Serial Devices

### FEATURES & BENEFITS

- Easily connect all types of serial devices via IEEE 802.3 Ethernet LAN
- Dual serial ports, each can be RS232, RS422 or RS485 which is DIP switch selectable
- Serial ports can be set up individually via easy-to-use web browser with password protection
- Programmable baud rate (from 110bps to 230,400bps)
- Full-duplex (serial data in/data out)
- Hardware RTS/CTS flow control
- Software flow control (XON/XOF, None)
- Supports variant of protocols: TCP, UDP, IP, ICMP, HTTP, TFTP, ARP, DHCP Client, SNMP (get)
- Ident-and-Connect™ utility allows available ARS1200 in the network to be automatically discovered and connected
- Includes SerialComm™ Virtual COM utility
- Support loop back diagnostic utility
- Supports watch dog timer
- Firmware upgrade via web browser
- Full compliment of status LEDs and activity indicators for easy installation, monitoring and diagnostics
- Extended operational temperature range
- Optional industrial DIN Rail mounting hardware accessory, DB9 to terminal strip or RJ-45 termination adaptor

### OVERVIEW

The Aboundi ARS1200 Ethernet Dual SerialBridge™ easily brings a network connection to any serial device in a simple and secure manner. The ARS1200 enables remote accessibility for services and support to any legacy serial devices within a wired Ethernet environment. It combines the benefits of data networking with proven asynchronous connectivity to Ethernet LANs.

The ARS1200 has a broad range of networking functions utilizing TCP/IP and UDP/IP to provide serial tunneling. It is easy to set up using a secure web browser. Its flash-upgradeable firmware provides future upgradeability.

The Ident-and-Connect™ auto discovery utility allows the user easily find all the available ARS1200 in the network and can access any specific ARS1200. The SerialComm™ Virtual COM utility will treat the ARS1200 serial ports as the COM ports of the Windows based PC/NB running the Virtual COM utility.

The SerialComm™ provides the function including diagnostic service tools with event log record for the ease of maintenance.

The ARS1200 supports full and half-duplex transmission, software and hardware flow control, and has programmable baud rates for application optimization.

Overall, the ARS1200 will enable secure connections for most serial applications including retail point-of-sales, remote metering and display, industrial and building automation, security and access control and general data acquisition applications.



# ARS1200™ Ethernet Dual Serial Bridge™

## SPECIFICATIONS\*

### Serial

- Baud Rate Options: 230400, 115200, 57600, 38400, 19200, 9600, 4800, 2400, 1200, 600, 300, 150, 110 bps
- Data Length Options: 5, 6, 7, 8 Bits
- Parity Options: Even, Odd, None, Mask, Space
- Stop Bit Options: 1 (default), 2 Bits
- Handshake Flow Control:  
Hardware Flow Control (RTS/CTS)  
Software Flow Control (XON/XOF, None)
- Two Male DB9 RS232 Connectors
- Serial UART Buffer: 4096 Bytes Input, 4096 Bytes Output

### Power

- Absolute Voltage Power Source Range: 12 to 28 Vdc/Vac
- Current: 240mA Typical @ +12Vdc

### Software

- No Driver Required
- Utility: Auto Discovery, SerialComm™ Virtual COM and Loop Back Diagnostic Software for Windows NT/2000/XP

### Mechanical

- Ethernet port connection: RJ-45
- DIP Switch for Serial Port Type Selection
- LED: Power, Alarm, Link, Activity, RS232, RS422, RS485
- Dimensions : 11.3 x 8.9 x 2.3 cm / 4.5 x 3.5 x 0.9 in
- Weight: 9.7 oz./274 g

### Environment

- Temperature:  
Operating : -20 to +70°C / -4 to +158°F  
Storage : -40 to +85°C / -40 to +185°F
- Relative Humidity : 95% (non-condensing)

### EMC Certifications

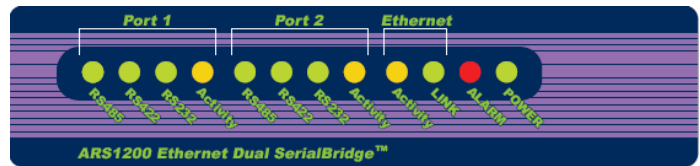
- USA : FCC Part 15 Subpart B Class A
- CE : ETSI EN 55022, EN 55024, EN 60950, EN 61000

### ORDERING INFORMATION

ARS1200-001-xx Standard Unit

ADK1000-000 DIN Rail Mounting Kit  
 ADK1120-002 DB9 to RJ-45/RS232 Adaptor  
 ADK1120-003 DB9 to RJ-45/RS422/RS485 Adaptor  
 ADK1120-004 DB9 to Terminal Strip Adaptor

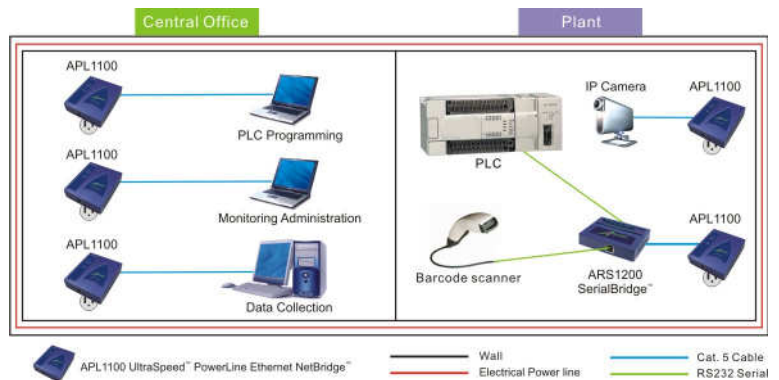
Note : xx= 01 External 110V AC Power Adaptor  
 02 External 220V AC Power Adaptor  
 03 External 220V AC UK Power Adaptor



Port	Port 2	Port 1	RS232	RS422	RS485 2W	RS485 4W
DIP Switch	1 2 3 4					
Console	OFF OFF OFF OFF					
RS232	OFF ON OFF ON					
RS422	ON OFF ON OFF					
RS485	ON ON ON ON					
			1	2	3	4
			5	6	7	8
			9			
			RxD	TxD	GND	GND
			Tx+	Rx-	Tx-	Rx+
			GND	GND	GND	GND
			RTS	CTS	Tx-	Tx-
					DATA+	DATA-



## Powerline Networking Solution



## POS integration with Video Surveillance Application

